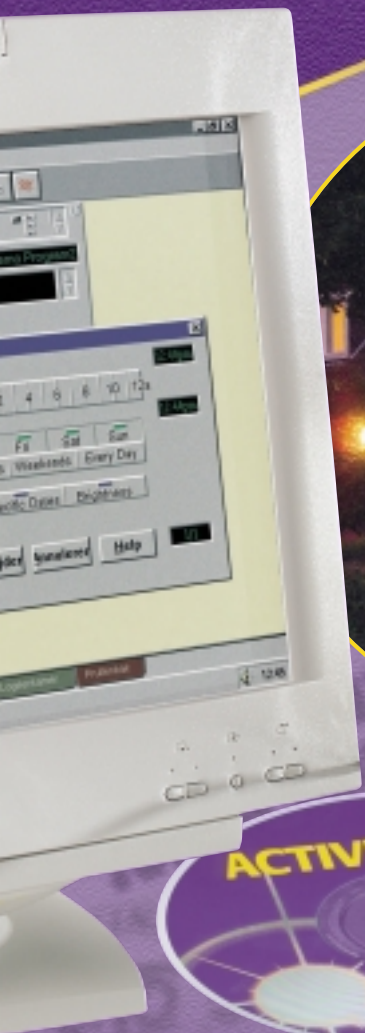


SMARTHOME

create the house of the future now



Control all your appliances and lights without leaving your chair.

Easy to program via your computer.

Unlimited expansion possibilities.



MARMITEK



Feel safe

- Simulate presence during absence.
- Switch all the lights on with the press of a button when there is a suspect sound.



With one press of a button...

- Dim and switch your lights and appliances.
- Create the perfect atmosphere for a dinner party, watching a movie, etc.
- Switch all the lights on or off when leaving, coming home and going to bed



Use the phone...

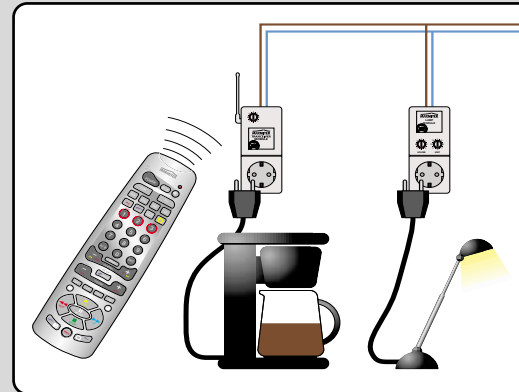
- Control your lights, heating and appliances by phone, wherever you are.
- Being warned when the burglar alarm is activated (SC2800).

Marmitek Home Automation is pleasant and comfortable, safe and offers extra security, whether you are at home. For some, Home Automation is used to control the lighting with the remote control used for the TV, for others Home Automation is a computerized system that adds to the security. Marmitek offers you plenty of options.

Create "the house of the future" now



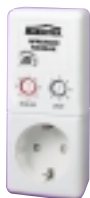
Create a system that is designed for...



Lamp Module LM12
Switch and dim your lights.



Appliance Module AM12
Switch any appliance on or off.



MicroModules
Make your system totally invisible: Build the modules into existing switches or sockets.



Wireless Switch SS13
Flat designer switch, can be attached everywhere.



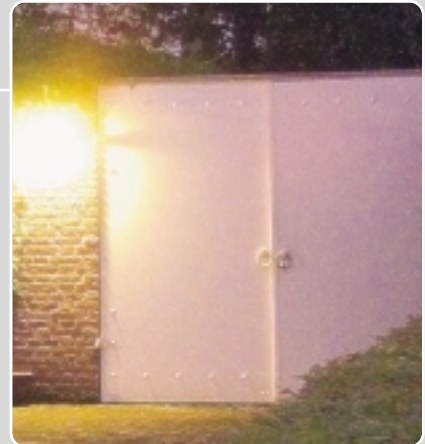
In-Wall Switch, Dimmer, Shade Shutter Switch
In-wall switch with built-in X10 functionality.
AW10 Switch
LW11 Dimmer
SW10 Shade Shutter Switch



... makes your life more
 ...ves electricity and gives you
 ...re in the house or not.
 ... means being able to
 ... same remote control as is
 ...me Automation is a fully
 ...adjusts itself to their life style.
 ...of choice.

Program everything when you want to

- The software calculates when it gets dark, taking daylight savings time into account.
- Switch the lighting 'randomly' at night, to make it look as if you are at home.



W

Comprehensive applications via your PC, such as lived-in look during holidays.

Use one remote control to switch and dim lights, electric appliances, water fountains, audio and video equipment, etc.

Use the ultra-thin designer switches to create switch points in places without wiring (also on glass doors, moving elements, etc.).

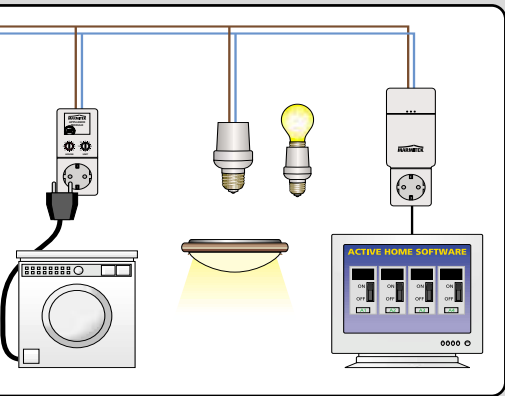
No extra wiring: the X10 signals are transmitted via the mains.

No need to go out...

- Switch on outdoor appliances and lights from your living room. No need for extra wiring: all signals are transmitted via the mains to e.g. garden lighting, fountain, swimming pool, garden shed, etc.



your needs!



Easy living

- Switch off all appliances or lights with one press of a button when you go to sleep or leave the house.
- Wake up to the smell of fresh coffee: The coffee machine will start automatically.



Motion Detector MS13
 Motion controlled activation of lamps and appliances. Built-in dusk and dawn detection.



PC Interface CM11
 Program your entire system via the PC. The PC can then be switched off.



Din Rail modules
 Integrate the X-10 System in your distribution panel.



Remote controls
 Available in several types and sizes.



Maxi Controller/Security Console SC2800
 Complete wireless security system with dial-in and dial-out. Transmit commands to the system by phone to e.g. switch on lights.





Smart Home - Complete Kit CK17

All you need in one kit.

Including comprehensive remote control, also suitable for all your audio and video equipment.

Including PC interface and Windows software: Program everything on your PC.

Burglar prevention: Create a lived-in look during absence.

Contents

Computer Interface CM11

Program your entire Smart Home System on your computer. The computer can then be switched off; the settings are saved in the CM11.

Connection to the serial port of your PC.

Bayonet or Screw-in Lamp Socket LM15

It couldn't be easier: Place the socket into the lamp and then the bulb into the socket. Done!

Appliance Module AM12

Switch all your appliances on or off: coffee machine, audio/video equipment, washing machine (off-peak period), etc.

Lamp Module (2x) LM12

Switch and dim your lights to any desired setting (max. 300 Watt).

Transceiver TM13

Transmit the commands for your remote control via the mains.

Also operates as an appliance module.

8 in 1 Multimedia Remote Control

Control your entire system with one remote control, even through walls and ceilings. Also suitable for use as a universal remote control for all your audio and video equipment. Pre-programmed for all common brands and models. Contains a programmable Macro button to e.g. dim the lights, tune the TV to the right channel, start the DVD player and activate your Home Cinema System with one press of a button.



Home Control Kit - Starter Kit LK15

Starter kit with three basic elements.

Easy and unlimited expansion possibilities.

Including compact key chain remote control.

Contents

Transceiver TM13

Transmits the commands from your remote control via the mains.

Also functions as an appliance module.

Bayonet or Screw-in Lamp Socket LM15

It couldn't be easier: Place the socket into the lamp and then the bulb into the socket. Done! (Max. 100 Watt)

Remote Control KR22

Compact key chain remote control, for 4 randomly chosen modules.